

Plau 501

Gabriele e Oscar Buratti
.12 - .14

Plau 501



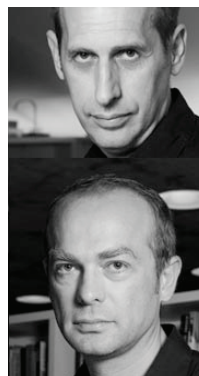
INTRO

In sintonia con una società che interseca sempre più indissolubilmente work e life, sfera pubblica e privata, Tecno continua la sua esplorazione sull'evoluzione dell'oggetto d'uso, estendendo le caratteristiche di trasversalità e flessibilità di un suo prodotto ormai classico.

La collezione di poltroncine PLAU, progettate da Gabriele e Oscar Buratti, si amplia con le nuove versioni 2014. La poltroncina a pozzetto, prevista finora con i fianchi a terra, viene presentata nelle nuove versioni con base metallica e nella nuova finitura in cuoio. La base con 4 razze in fusione di alluminio lucidato o verniciato, con o senza ruote, e la base con 4 gambe in metallo curvato, cromato e verniciato, accolgono il nuovo pozzetto più aereo e leggero.

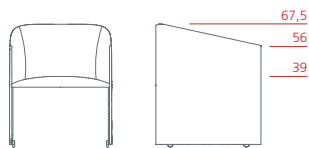
Estrema comodità d'uso ed eleganza caratterizzano questo prodotto, la cui versatilità gli consente di trovare spazio sia nell'ambiente casa, sia negli spazi di lavoro e contract, nelle aree meeting, di attesa e lounge.

DESIGNER

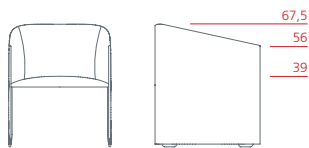


Gabriele e Oscar Buratti

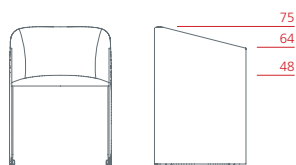
Plau 501



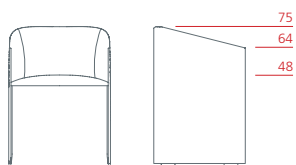
Poltroncina bassa con rotelle
1PL6021: L 56 P 57,5 H 67,5



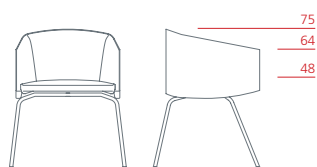
Poltroncina bassa su piedini
1PL6022: L 56 P 57,5 H 67,5



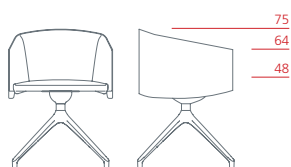
Poltroncina alta con rotelle
1PL6011: L 56 P 50,5 H 75



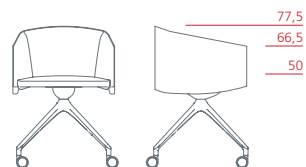
Poltroncina alta su piedini
1PL6012: L 56 P 50,5 H 75



Poltroncina su quattro gambe
1PL6030: L 65 P 58,5 H 75



Poltroncina a quattro razze con piedini
1PL6042: L 56 P 51,5 H 75

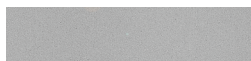


Poltroncina a quattro razze su rotelle
1PL6041: L 56 P 51,5 H 77,5

Plau 501

BASE

1PL6030



CROMO



VERNICIATO OPACO GRIGIO
PIOMBO

1PL6042-41



ALLUMINIO LUCIDATO



VERNICIATO OPACO GRIGIO
PIOMBO



VERNICIATO OPACO SABBIA

RIVESTIMENTO

Disponibili tutti i rivestimenti presenti nella seguente lista

Tessuti 1/4

TC (Categoria 01)

CUSTOM

TESSUTO CLIENTE

LANI (Categoria 02)



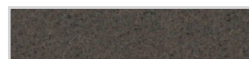
GRIGIO CHIARO



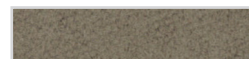
GRIGIO SCURO



NERO



MARRONE



OCRA



SENAPE



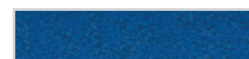
ARANCIONE



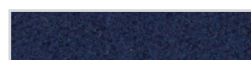
ROSSO



ROSSO SCURO



BLU CHIARO



BLU SCURO



AZZURRO

Tessuti 2/4

FIELD (Categoria 02)



BIANCO - NERO



GRIGIO VERDE



NERO



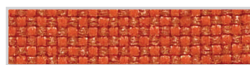
CALCE



SABBIA



GIALLO



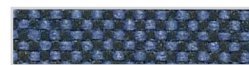
ROSSO



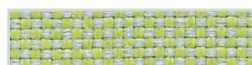
VIOLA



BLU VIOLA



BLU PETROLIO



VERDE CHIARO



VERDE KIWI

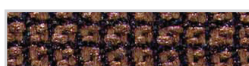
METRIC (Categoria 02)



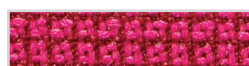
GRIGIO VERDE



SABBIA



MARRONE



MAGENTA



ROSSO



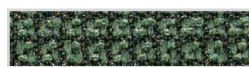
ARANCIONE



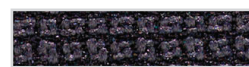
GIALLO



VERDE



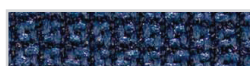
VERDE OLIVA



NERO - GRIGIO



GRIGIO SCURO

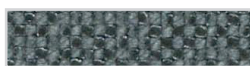


BLU CLASSICO

HOT (Categoria 02)



BIANCO



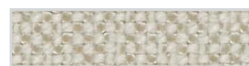
GRIGIO SCURO



NERO



PANNA



SABBIA



MARRONE



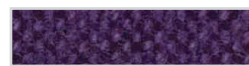
GIALLO



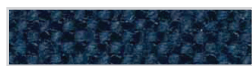
OCRA



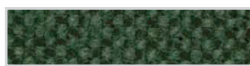
ARANCIONE



VIOLA



BLU CLASSICO



VERDE OLIVA

Tessuti 3/4

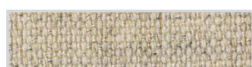
REMIX (Categoria 02)



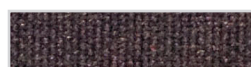
GRIGIO CHIARO



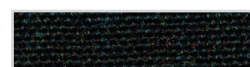
GRIGIO



SABBIA



AMARANTO



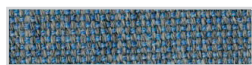
CAFFÈ



ARANCIONE TERRA



ARANCIONE



NUBE



BLU PETROLIO



ACQUA



VERDE CHIARO



VERDE

STEELCUT TRIO (Categoria 03)



BIANCO - NERO



BIANCO - GRIGIO



BIANCO - ROSSO



BEIGE



MARRONE - VIOLA



OCRA



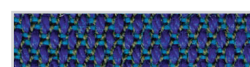
ARANCIONE



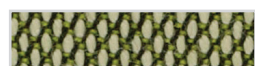
MAGENTA



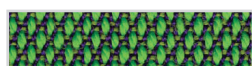
GHIACCIO



VIOLA - TURCHESE



VERDE - BIANCO



VERDE - VIOLA

STEELCUT 2 (Categoria 03)



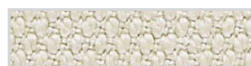
PANNA



GRIGIO VERDE



NERO



KAKI



MARRONE



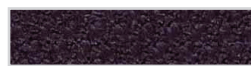
GIALLO



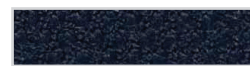
ARANCIONE



ROSSO



AUBERGINE



BLU CLASSICO



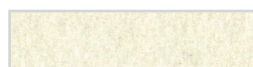
VERDE PRATO



VERDE OLIVA

Tessuti 4/4

DIVINA (Categoria 03)



CALCE



NERO



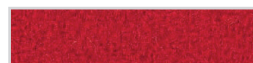
SABBIA



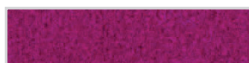
GIALLO



ARANCIONE



ROSSO



MAGENTA



VIOLA



BLU ELETTRICO



BLU CLASSICO

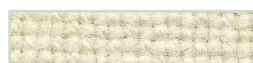


VERDE CHIARO



VERDE KIWI

HALLINGDAL (Categoria 03)



PANNA



GRIGIO



NERO - GRIGIO



MARRONE - GRIGIO



MARRONE



OCRA



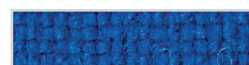
ARANCIONE



ARANCIONE - MARTE



ROSSO



BLU ELETTRICO



VIOLA

Pelle

PELLE (Categoria 04)



Cuoio

CUOIO (Categoria 08)

